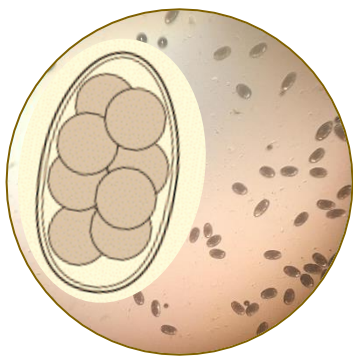


Fecal egg counts in sheep and goats

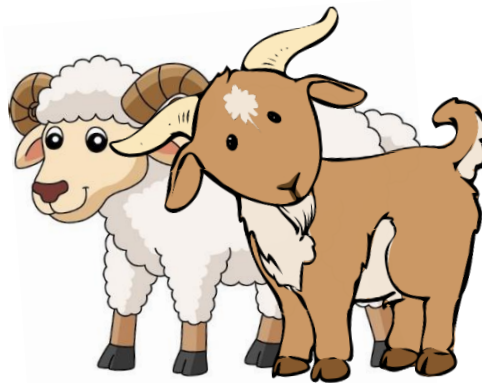
A fecal egg count (FEC) is a quantitative measure of how many worm eggs a sheep/goat is passing in each gram of its manure. You get a number like 1000 EPG (eggs per gram of feces).

What are fecal egg counts used for?

1. Determine dewormer effectiveness (fecal egg count reduction test)
2. Measure pasture contamination.
3. Identify low egg shedders (resistant animals) and/or vice versa.
4. Support (not make) a diagnosis and treatment recommendation.

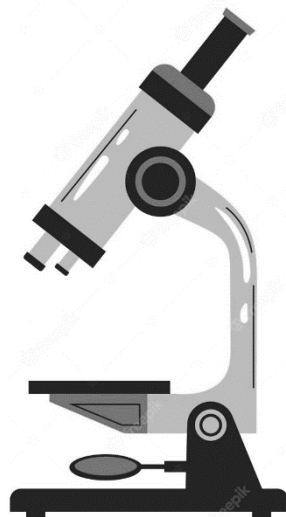
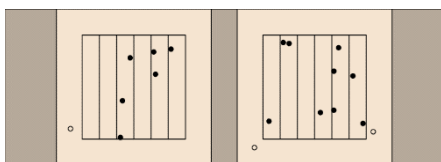


Fecal egg counts are usually for the strongyle-type worms (*Haemonchus*, *Teladorsagia*, and *Trichostrongyles*) which all look the same under magnification.



You need to collect 2-4 grams of fecal matter from each sheep/goat you want to test. Samples can be analyzed individually or as part of a pooled sample.

You can learn to do your own fecal egg counts. You need a microscope (100x; mechanical stage helpful), gram scale, flotation solution, egg counting slide (called a McMaster slide), and some miscellaneous supplies.



Unlike simple fecal flotations (often done by vet offices), fecal egg counts are quantitative because a known amount (weight) of feces is mixed with a known amount (ml) of flotation solution and the eggs are counted.



By Susan Schoenian (2023)
Sheep & Goat Specialist Emeritus
University of Maryland Extension
Visit wormx.info for more info